

Process map to guide Primary Health Care professionals where there is concern about the possibility of child sexual abuse

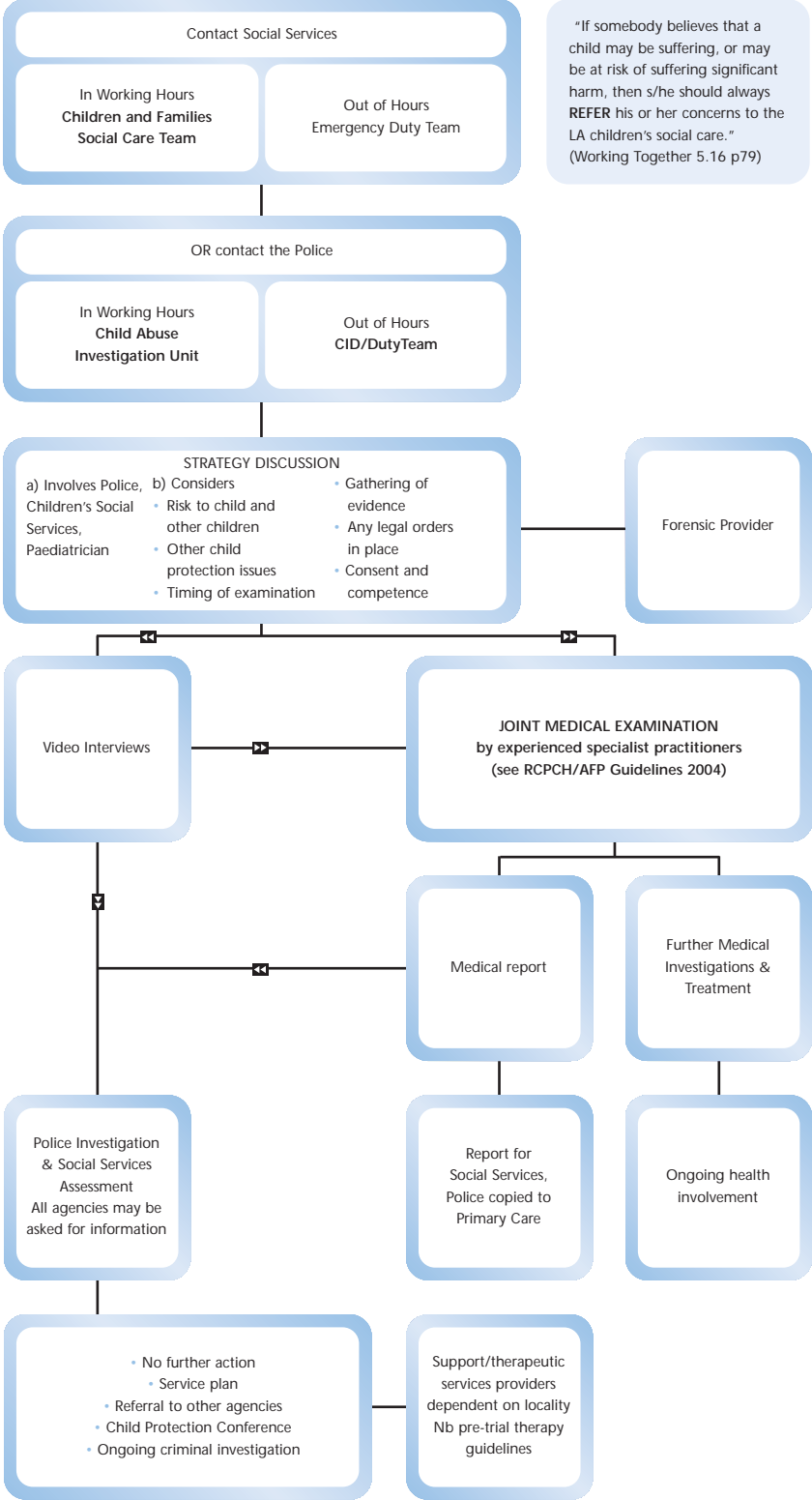
“Everyone who works or has contact with children, parents, and other adults in contact with children should:

1. be able to recognise, and know how to act upon, evidence that a child’s health or development is or may be being impaired and especially when they are suffering, or at risk of suffering, significant harm” (WT 5.7, p77)

All staff members who have or become aware of concerns about the safety of a child or children should know

- what services are available locally
- how to gain access to them
- what sources of further advice and expertise are available
- who to contact in what circumstances, and how and
- when to make a referral to LA children’s social care

(WT 5.11, p77-78)



“If somebody believes that a child may be suffering, or may be at risk of suffering significant harm, then s/he should always REFER his or her concerns to the LA children’s social care.” (Working Together 5.16 p79)